



**Noise Monitoring Result**

**Day Time (0700 - 1900hrs on normal weekdays)**

Location: M1a - Footbridge at EX-Wanchai Harbour Road Sports Centre

Date	Time	Weather	Measurement Noise Level			Baseline Level	Construction Noise Level	Limit Level
			Leq	L10	L90	Leq	Leq	Leq
Unit: dB(A), (30-min)								
30/7/19	15:20	Cloudy	70.6	75.5	66.5	72	71	75
8/8/19	15:30	Fine	74.6	76.0	72.5	72	71	75
12/8/19	16:00	Fine	67.6	71.5	62.5	72	68	75
19/8/19	10:59	Fine	67.1	70.7	63.2	72	67	75
26/8/19	13:47	Rainy	67.4	71.3	64.1	72	67	75



### Noise Monitoring Result

#### Day Time (0700 - 1900hrs on normal weekdays)

Location: M2b - Noon-day gun area

Date	Time	Weather	Measurement Noise Level			Baseline Level	Construction Noise Level	Limit Level
			Leq	L10	L90	Leq	Leq	Leq
Unit: dB(A), (30-min)								
30/7/19	16:30	Cloudy	65.3	67.0	61.5	68	65	75
8/8/19	16:29	Fine	62.7	65.0	60.5	68	63	75
12/8/19	10:40	Fine	65.9	68.0	60.5	68	66	75
19/8/19	13:56	Fine	66.3	68.8	61.5	68	66	75
26/8/19	14:23	Rainy	65.9	68.2	61.3	68	66	75

Location: M3a - Tung Lo Wan Fire Station

Date	Time	Weather	Measurement Noise Level			Baseline Level	Construction Noise Level	Limit Level
			Leq	L10	L90	Leq	Leq	Leq
Unit: dB(A), (30-min)								
30/7/19	08:57	Cloudy	63.8	66.5	61.5	69	64	75
8/8/19	9:00	Fine	64.4	67.0	61.5	69	64	75
12/8/19	13:00	Fine	63.6	66.0	59.5	69	64	75
19/8/19	14:42	Fine	62.8	65.9	58.7	69	63	75
26/8/19	17:16	Rainy	62.4	66.4	58.0	69	62	75



**Noise Monitoring Result**

**Day Time (0700 - 1900hrs on normal weekdays)**

Location: M4b - Victoria Centre

Date	Time	Weather	Measurement Noise Level			Baseline Noise Level	Construction Noise Level	Limit Level
			Leq	L10	L90	Leq	Leq	Leq
Unit: dB(A), (30min)								
30/7/19	08:20	Cloudy	65.7	67.5	63.5	67	66	75
8/8/19	08:20	Fine	66.7	68.5	64.0	67	67	75
12/8/19	13:40	Fine	67.3	70.5	62.5	67	67	75
19/8/19	15:29	Fine	68.4	71.6	63.0	67	62	75
26/8/19	16:35	Rainy	67.1	71.9	62.7	67	67	75

Location: M5b - City Garden

Date	Time	Weather	Measurement Noise Level			Baseline Level	Construction Noise Level	Limit Level
			Leq	L10	L90	Leq	Leq	Leq
Unit: dB(A), (30min)								
30/7/19	9:50	Cloudy	69.4	71.5	66.5	68	64	75
8/8/19	9:50	Fine	69.9	70.5	68.0	68	65	75
12/8/19	14:20	Fine	69.4	71.0	67.5	68	64	75
19/8/19	16:13	Fine	68.9	71.4	66.2	68	62	75
26/8/19	15:51	Rainy	67.3	72.8	64.8	68	67	75

Location: M6 - HK Baptist Church Henrietta Secondary School

Date	Time	Weather	Measurement Noise Level			Baseline Level	Construction Noise Level	Limit Level
			Leq	L10	L90	Leq	Leq	Leq
Unit: dB(A), (30-min)								
30/7/19	10:30	Cloudy	66.4	67.5	64.0	71	66	70
8/8/19	10:25	Fine	67.4	69.5	64.5	71	67	70
12/8/19	14:55	Fine	65.4	67.5	63.6	71	65	70
19/8/19	16:54	Fine	67.4	69.6	62.3	71	67	70
26/8/19	15:14	Rainy	68.3	70.5	63.2	71	68	70



**Noise Monitoring Result**

**Day Time (0700 - 1900hrs on normal weekdays)**

Location: M7e - International Finance Centre (Eastern End of Podium) (Reference Station)

Date	Time	Weather	Measurement Noise Level			Baseline Level	Construction Noise Level	Limit Level
			Leq	L10	L90	Leq	Leq	Leq
Unit: dB(A), (30-min)								
30/7/19	13:00	Cloudy	67.3	70.5	64.5	67	58	N/A
8/8/19	13:00	Fine	67.2	70.5	62.5	67	57	N/A
13/8/19	13:00	Fine	66.1	68.5	61.5	67	66	N/A
19/8/19	9:36	Fine	66.5	68.7	61.7	67	67	N/A
29/8/19	16:25	Cloudy	66.8	68.8	61.2	67	67	N/A

Location: M7w - International Finance Centre (Western End of Podium)

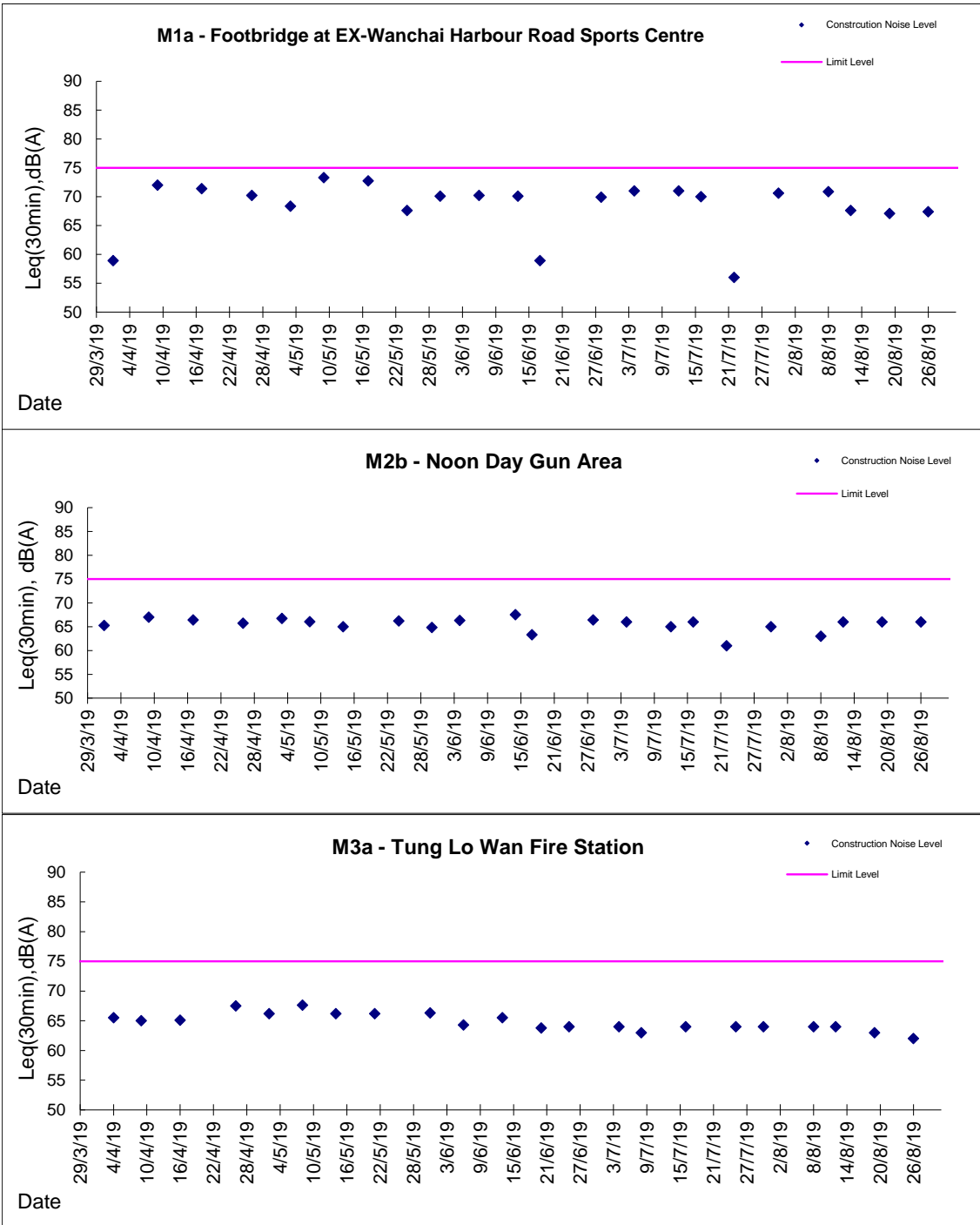
Date	Time	Weather	Measurement Noise Level			Baseline Level	Construction Noise Level	Limit Level
			Leq	L10	L90	Leq	Leq	Leq
Unit: dB(A), (30-min)								
30/7/19	13:36	Cloudy	65.8	68.0	61.5	69	66	75
8/8/19	13:40	Fine	65.7	68.0	61.5	69	66	75
13/8/19	13:35	Fine	63.8	66.0	59.5	69	64	75
19/8/19	9:03	Fine	64.3	67.4	59.1	69	64	75
29/8/19	17:03	Cloudy	65.5	68.3	60.4	69	66	75

Location: M8 - City Hall

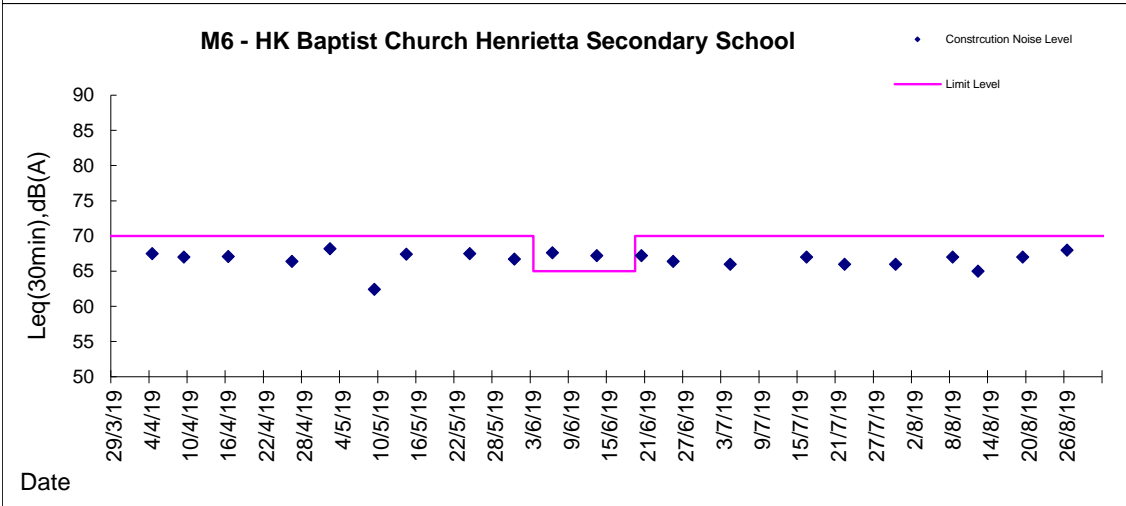
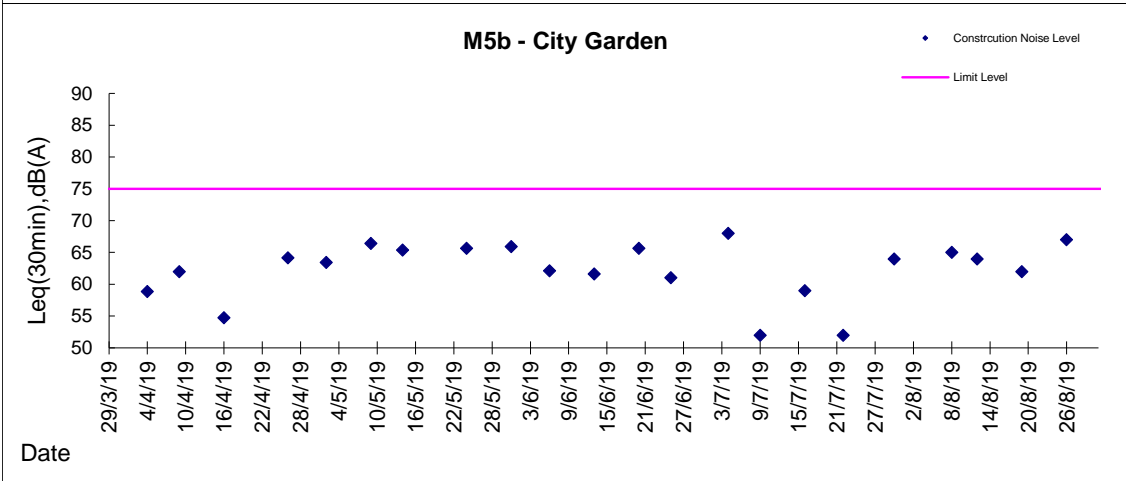
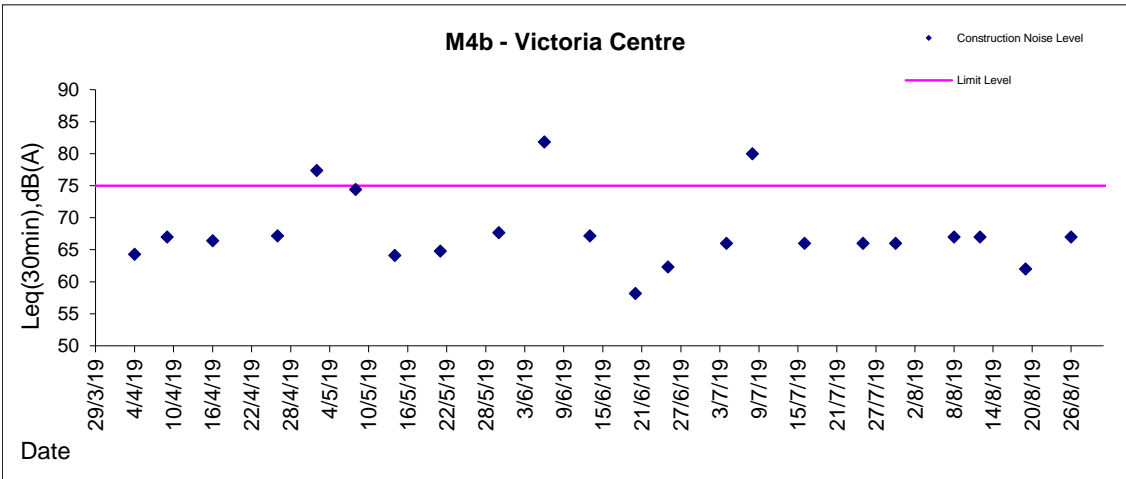
Date	Time	Weather	Measurement Noise Level			Baseline Level	Construction Noise Level	Limit Level
			Leq	L10	L90	Leq	Leq	Leq
Unit: dB(A), (30-min)								
30/7/19	14:25	Cloudy	57.4	60.5	54.5	64	57	70
8/8/19	14:30	Fine	61.7	63.5	58.5	64	62	70
13/8/19	14:30	Fine	62.7	64.0	58.5	64	63	70
19/8/19	10:17	Fine	63.5	66.2	58.6	64	64	70
29/8/19	15:49	Cloudy	64.0	67.1	57.9	64	64	70

**Graphic Presentation of Noise Monitoring Result**

**Day Time (0700 - 1900hrs on normal weekdays)**



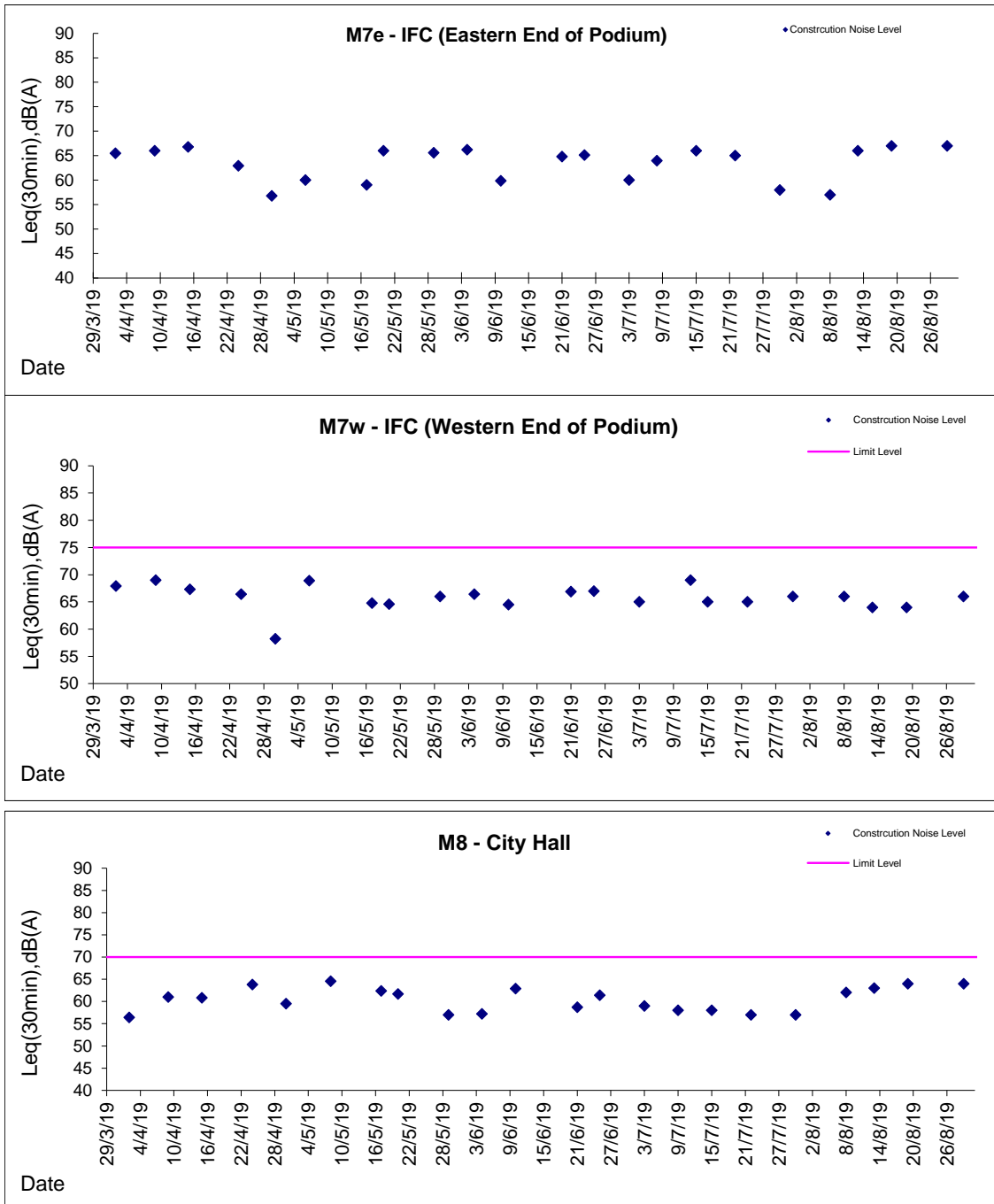
**Graphic Presentation of Noise Monitoring Result**  
**Day Time (0700 - 1900hrs on normal weekdays)**





**Graphic Presentation of Noise Monitoring Result**

**Day Time (0700 - 1900hrs on normal weekdays)**



\* Remark: M7e - IFC (Eastern End of Podium) is a reference monitoring station